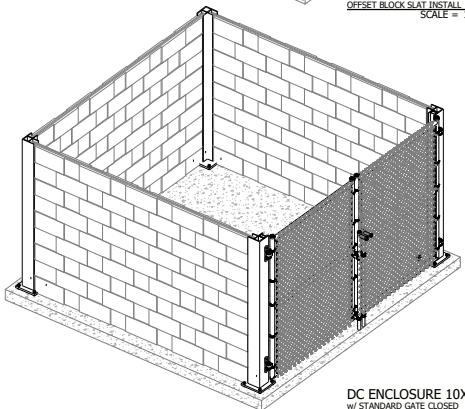
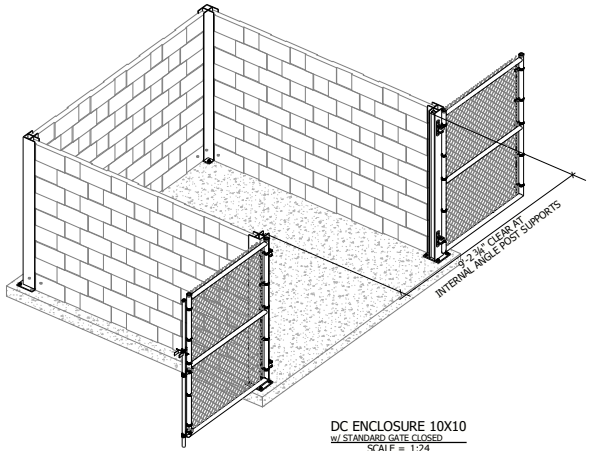


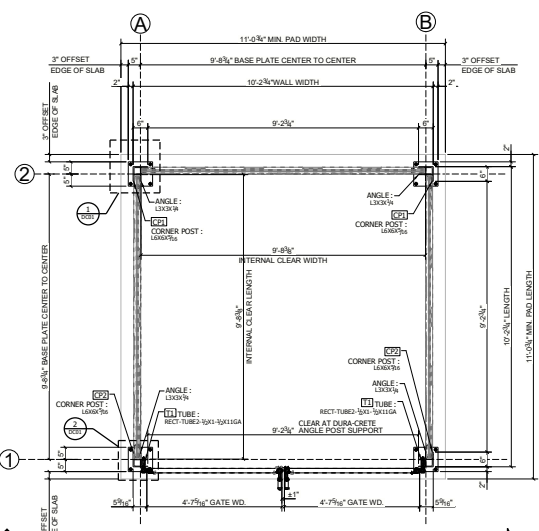
CONCRETE PAD REQUIREMENTS & OFFSET BLOCK SLAT INSTALL
SCALE = 1:24



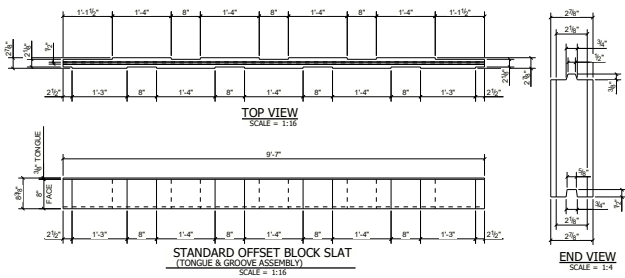
DC ENCLOSURE 10X10
w/ STANDARD GATE CLOSED
SCALE = 1:24



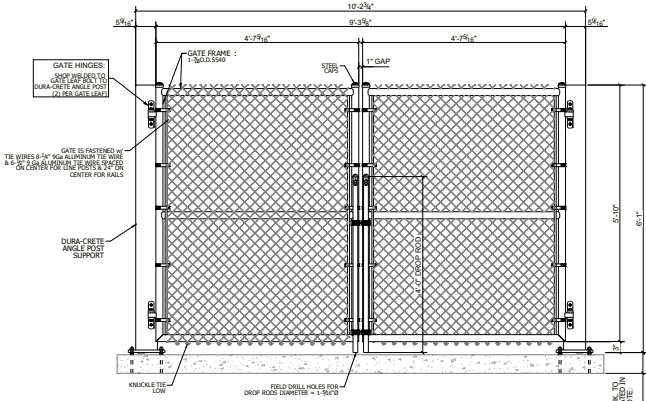
DC ENCLOSURE 10X10
w/ STANDARD GATE CLOSED
SCALE = 1:24



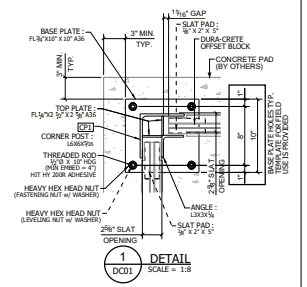
DC ENCLOSURE 10X10 BASE PLATE POSITION PLAN
SCALE = 1:24



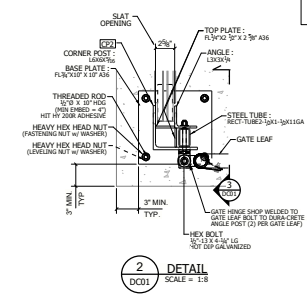
STANDARD OFFSET BLOCK SLAT
(TONGUE & GROOVE ASSEMBLY)
SCALE = 1:16



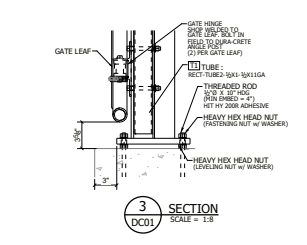
SECTION 4
SCALE = 1:16



DETAIL 1
DC01 SCALE = 1:8



DETAIL 2
DC01 SCALE = 1:8



SECTION 3
DC01 SCALE = 1:8

MINIMUM FOUNDATION SPECS AS FOLLOWED:

18"9 x 48" DEEP IN UNDISTURBED SOIL OR INTO BACKFILLED GRANULAR MATERIAL WITH 95% PROCTOR DENSITY COMPACTION.
3000-3500 PSI COMPRESSIVE STRENGTH AT 28 DAYS w/ 3-4" SLUMP
ENCLOSURE TYPE DURA-CRETE WALL PLAN PLEASE SEE BELOW FOR ADDITIONAL CONCRETE PAD SPECIFICATION REQUIREMENTS

SOIL CONDITIONS ALLOWABLE AVERAGE SOIL STRESS FOR LATERAL DESIGNS, S1 = 1000PSI MIN. STANDARD WIND EXPOSURE CATEGORY B = 85MPH GEO-TECHNICAL EVALUATION MAY BE REQUIRED PER YOUR CITY'S GUIDELINES.

GOVERNING BUILDING CODES:
MICHIGAN BUILDING CODE BASED ON IBC, LATEST EDITION- OCCUPANCY CATEGORY II

OTHER APPLICABLE CODES:
ASCE / SE7-05
ACI 318-08
ANSI / ASC 360-10

ENCLOSURE OFFSET BLOCK WALL CONCRETE PAD SPECIFICATION REQUIREMENTS:

ENCLOSURES PAD GRADE ALLOWANCE = 1" TO EVERY 10'-0" (0.68 OR 18" TO 12")

ENCLOSURES < 6'-0" TALL REQUIRE 4" OF SLAT POSITIONING

ENCLOSURES > 6'-0" (UP TO 10') TALL REQUIRE A MIN. 6" THICK SLAB FOUNDATION

ENCLOSURES > 10'-0" TALL WILL REQUIRE FOOTINGS

- DC ENCLOSURE 10X10**
- (1) BASE PLATE TEMPLATE (GA. MATERIAL/SIM)
 - (2) CORNER WALL POSTS
 - (3) RECT. TUBES
 - (4) 115" LG OFFSET BLOCK SLATS
 - (5) GATE PANELS FURNISHED w/ STEEL METAL FABRIC SHOWN
 - (6) DROP ROD ATTACHED TO GATE LEAF WEDGE ANCHORS (HDS) ARE PROVIDED
 - (7) FASTENERS FOR GATE LEAF HINGES PROVIDED

S-SERIES OFFSET BLOCK WALL SPECIFICATIONS

CORNER POST - CP1 = 11lbs

CP1 CP1'S REQ'D = 4-6lbs

115" DURA-CRETE SLAT WT# = 160lbs

QTY OF DURA-CRETE SLATS REQ'D = 8 PER WALL 27' TOTAL

WEIGHT = 1440 POUNDS REQ. TOTAL 4320 POUNDS TOTAL

CONCRETE PAD AND PAD REQUIREMENTS SHOWN ARE INSTALLED w/ VERIFICATION BY OTHERS

ALL EXPOSED STEEL FRAMING IS GALVANIZED. ALL HARDWARE TO HAVE RESISTANCE TO OUTDOOR ELEMENTS

REV	DATE	FOR FIELD USE	DESCRIPTION	CDM
DURA-CRETE WALLS				
American Concrete Institute Always Advancing				23450 REGENCY PARK DR. WARREN, MI 48089 P: 586.759.4286 www.duracretewalls.com
				CLIENT: ORDER NUMBER: PROJECT NAME: PROJECT LOCATION: STREET: CITY: STATE: PROJECT DESCRIPTION: DC ENCLOSURE 10X10
PLEASE NOTE: THESE DRAWINGS REPRESENT DURA-CRETE WALLS. INTERPRETATION OF THE INTENT OF THE CONTRACT DOCUMENTS. EVERY EFFORT HAS BEEN MADE TO ENSURE THAT THEY ARE ACCURATE AND COMPLETE. APPROVAL BY THE AUTHORIZED PARTIES SHALL CONSTITUTE ACCEPTANCE, AND ANY POST-APPROVAL CHANGES WILL BE CONSIDERED TO BE CHANGES TO DURA-CRETE WALLS CONTRACT.				DATE: 12/02/2024 DESIGNED BY: CDM CHECKED BY: CDM DATE OF ORDER: 12/02/2024 SHEET NUMBER: DC01