

2025

**DURA-CRETE**  
WALLS

# INSTALLATION GUIDE

DUMPSTER ENCLOSURE - STEEL POSTS



[www.duracretewalls.com](http://www.duracretewalls.com)

---

# TOOLS

For additional support please  
contact us at 586.759.4286 or  
[info@duracretewalls.com](mailto:info@duracretewalls.com)

## RECOMMENDED TOOLS

Post markers / spray paint  
Guide string  
Wrench  
Level  
Epoxy  
Impact driver  
Hammer drill bit  
Skid steer – forks & boom  
Scissor clamp slab grip  
Chop saw  
Concrete saw blade  
Gloves  
PPE

---

# INSTALLATION STEPS

## Post Setup –

Place posts according to desired layout, measure and mark anchor rod locations.

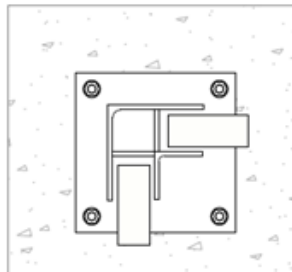
*Tip: For larger enclosures that include line posts, align all corner posts first before placing line posts (there will be a slight offset when aligning line post and corner post channels).*

Maximum post spacing – 9' 8-3/4"

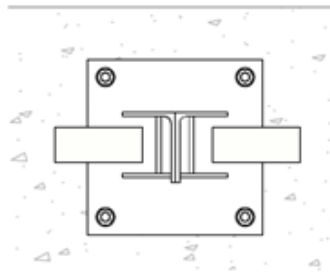
Posts should be at least 3" from edge of concrete pad.

See Additional Details for minimum concrete pad foundation requirements.

Corner Post



Line Post



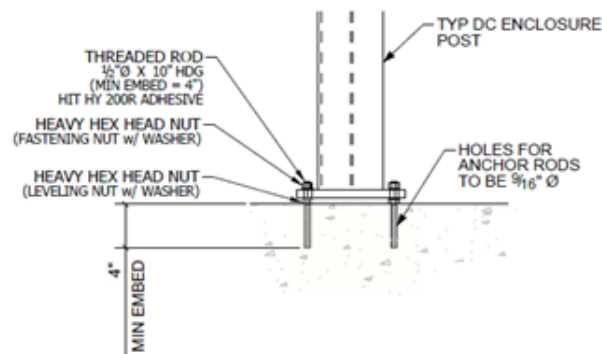
## Install Anchor Rods –

After posts are aligned and holes for anchor rod placement are marked, remove posts to drill and set anchor rods.

Drill 9/16" holes into concrete pad for anchor rods. **A 4" deep embedment into concrete pad is recommended.**

---

Insert and secure (4) 10 inch anchor rods per plate using epoxy grout per manufacturer's instruction (see Additional Details for grout recommendations).



### Install Posts –

Place and secure posts by using (1) nut and (1) washer below the post plate and another (1) washer and (1) nut on top. Tighten and secure, ensuring the post plates provide a level base for the concrete infill slats.

Once posts are properly aligned and secure, cut away excess anchor rod and, tighten nuts with impact driver – double check posts are still aligned properly.

*Note: In most cases there will be a slight gap underneath certain posts in the process of ensuring all post plates are plumb and level to one another, due to the grade of the concrete pad. For installations where there is a 3/4" or greater gap between the bottom of the post plate and top of concrete pad, an epoxy grout pad to help fill that gap is recommended for aesthetic purposes.*

*See pictures below demonstrating this process.*



### **Install Concrete Slats –**

Place 1/8" x 2" x 5" rubber slat pads into post channel on baseplate before stacking concrete slats.

For line posts that will be receiving a factory finished (uncut) slat end, insert c-channel into post channel and secure using 4 bolts into pre-drilled holes. *Do this prior to inserting concrete slats.*

Unstrap concrete slat units and sweep the top free of debris.

Using a skid steer, boom arm, and scissor clamp slab grip (rated for a minimum of 175 lbs) lift Dura-Crete slats and lower them into place inside the steel post channel.

*Tip: Have 1-2 people on the ground to guide the slats into proper position. Adjust slat as needed by hand to ensure it is in an even, level, and centered position.*

Stack additional slats on top using the tongue & grooved edge to properly align. Groove side should always be along the bottom, tongue side goes on top. Continue stacking slats on all three sides until enclosure is complete. *Note: For the Offset Block style, rotate slats' position/pattern as needed to achieve the correct off-set look. For Vertex, do the same to achieve a varied look, unless an in-line pattern is desired.*

---

## **Install Gates –**

Using (2) 4-3/4" bolts, (2) nuts, and (2) washers per hinge, attach the gate hinges to the gate frame.

Once hinges are attached to the gate frame, lift the gate into place (one leaf at a time) and attach to the pre-drilled gate posts using (2) 4-3/4" bolts, (2) nuts, and (2) washers per hinge. Start with the top hinge before moving to the bottom. Check alignment before tightening bolts fully. Adjust as needed to ensure the gate is plumb and level, then fully tighten bolts.

Swing gate open and closed to make sure it moves freely. Use a level to confirm it's hanging straight.

Repeat process with other gate leaves.

## ***Attach Drop Rods to Gate –***

For chain link gates, attach and secure drop rod guides to gate frame.

For wood gates, pre-drill and hand-tighten drop rod guides to 2x4 frame supports.

Once drop rods are attached to the gates, mark the concrete below to indicate where it comes to rest in the closed position. Drill holes into concrete for 1-5/16" diameter drop rods to secure in place when gates are closed. Repeat process if it is desired to have gates lock into place when open.

---

## Additional Details

### *Foundation –*

For a 10x10' enclosure, the minimum dimensions of the concrete pad are 11'0-3/4" x 11'0-3/4". *For other enclosure layouts please see detail to verify.*

Grade allowance for concrete pad - 1" to every 10'-0" (0.48° or 1/8" to 12").

Enclosures <8'-0" tall require a min. 6" thick slab foundation.

Enclosures ≥ 8'-0" (up to 10') tall require a min. 6" thick slab foundation.

Enclosures 10'-0" tall and above will require post footings.

### *Short Panels –*

Measure, mark, and cut individual slats to size using a chop saw with a concrete saw blade.

*Tip: Cut straight line along the side, then cut relief groove along the bottom before cutting down from top.*

Notch cut ends as needed to fit inside steel post channel.

It is recommended that all cut ends are kept on the same side of the panel.

Ensure slat rotation as needed before cutting to maintain desired pattern while keeping all cut ends on the same side of the panel.

### *Epoxy Grout –*

HIT-HY 200-A V3 Adhesive anchor or equivalent recommended.

HIT-HY 200-R V3 Adhesive anchor or equivalent recommended for cold weather installations.