

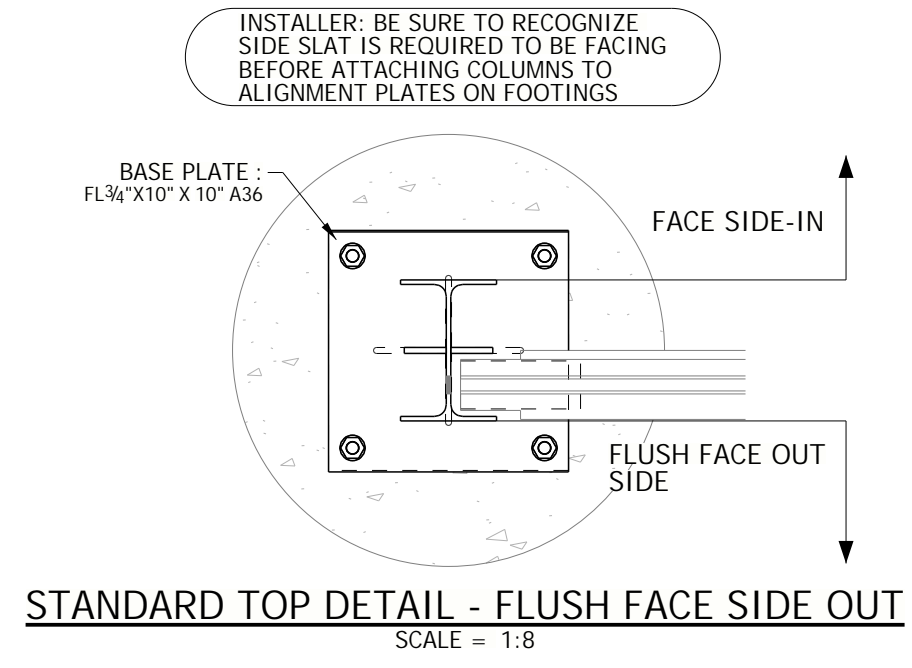
**MINIMUM FOUNDATION SPECS AS FOLLOWED:**

18"Ø X 48" DEEP IN UNDISTURBED SOIL OR INTO BACKFILLED GRANULAR MATERIAL WITH 95% PROCTOR DENSITY COMPACTION.  
 3000-3500 PSI COMPRESSIVE STRENGTH AT 28 DAYS W/ 3-4" SLUMP  
 ENCLOSURE TYPE DURA-CRETE WALL PLAN PLEASE SEE BELOW FOR ADDITIONAL CONCRETE PAD SPECIFICATION REQUIREMENTS

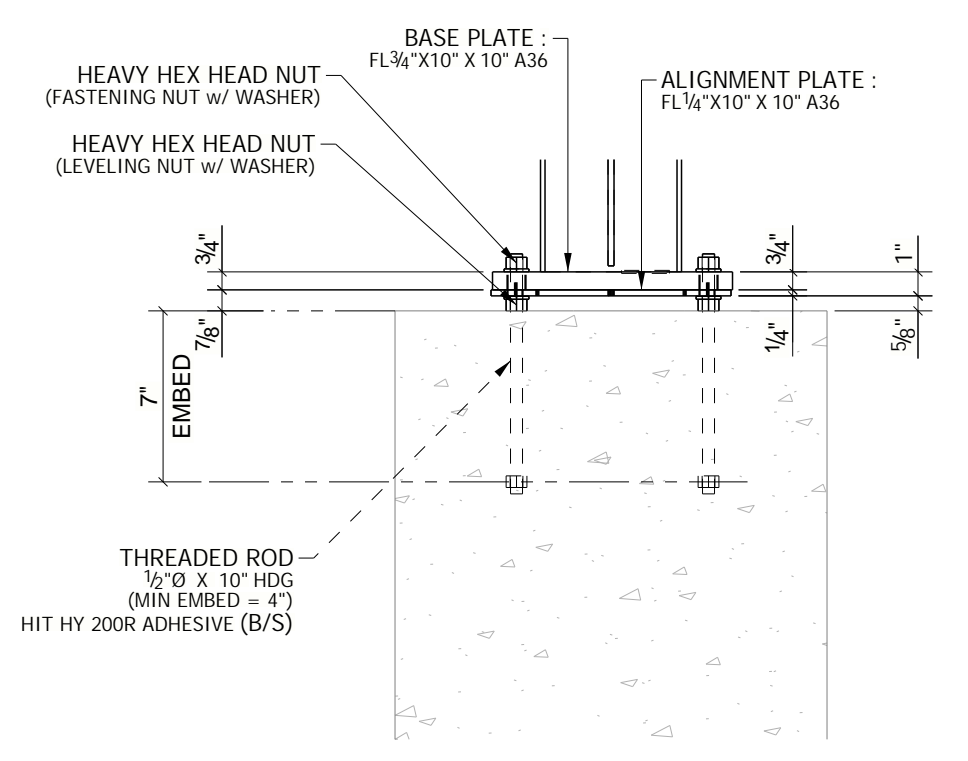
SOIL CONDITIONS ALLOWABLE AVERAGE SOIL STRESS FOR LATERAL DESIGNS, S1= 1000PSI MIN.  
 STANDARD WIND EXPOSURE CATEGORY B= 95MPH EXPOSURE CATEGORY C (115 mph) WIND LOAD INCREASE REQUIRE 8" MIN EMBEDMENT  
 GEO-TECHNICAL EVALUATION MAY BE REQUIRED PER YOUR CITY'S GUIDELINES.

**GOVERNING BUILDING CODES:**  
 MICHIGAN BUILDING CODE BASED ON IBC, LATEST EDITION- OCCUPANCY CATEGORY II

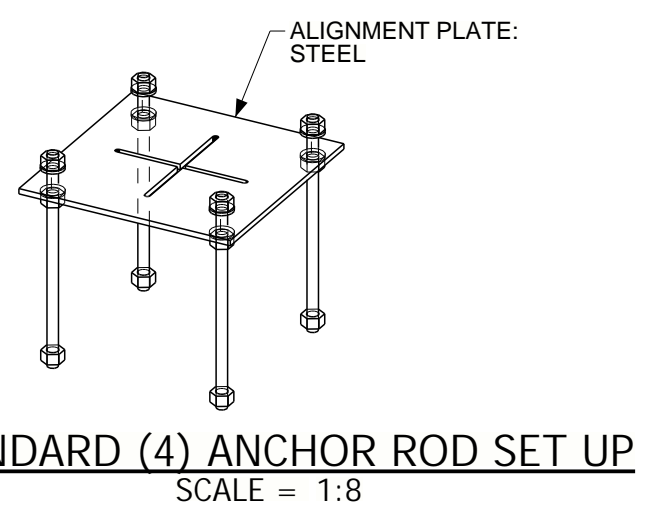
**OTHER APPLICABLE CODES:**  
 ASCE / SE7-05  
 ACT 318-19  
 ANSI / AISC 360-10  
 IN ACCORDANCE TO MBC 2021



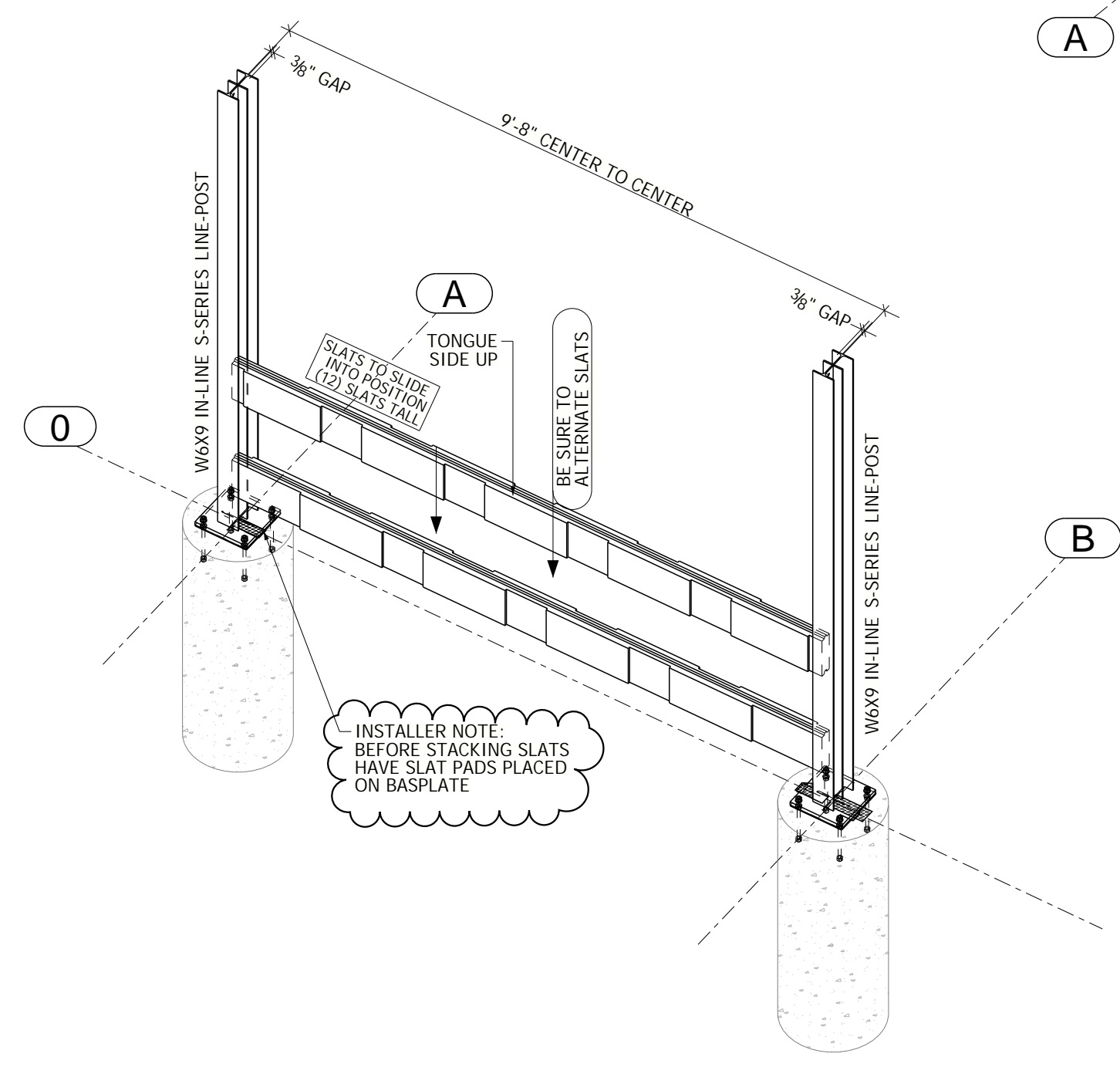
STANDARD TOP DETAIL - FLUSH FACE SIDE OUT  
SCALE = 1:8



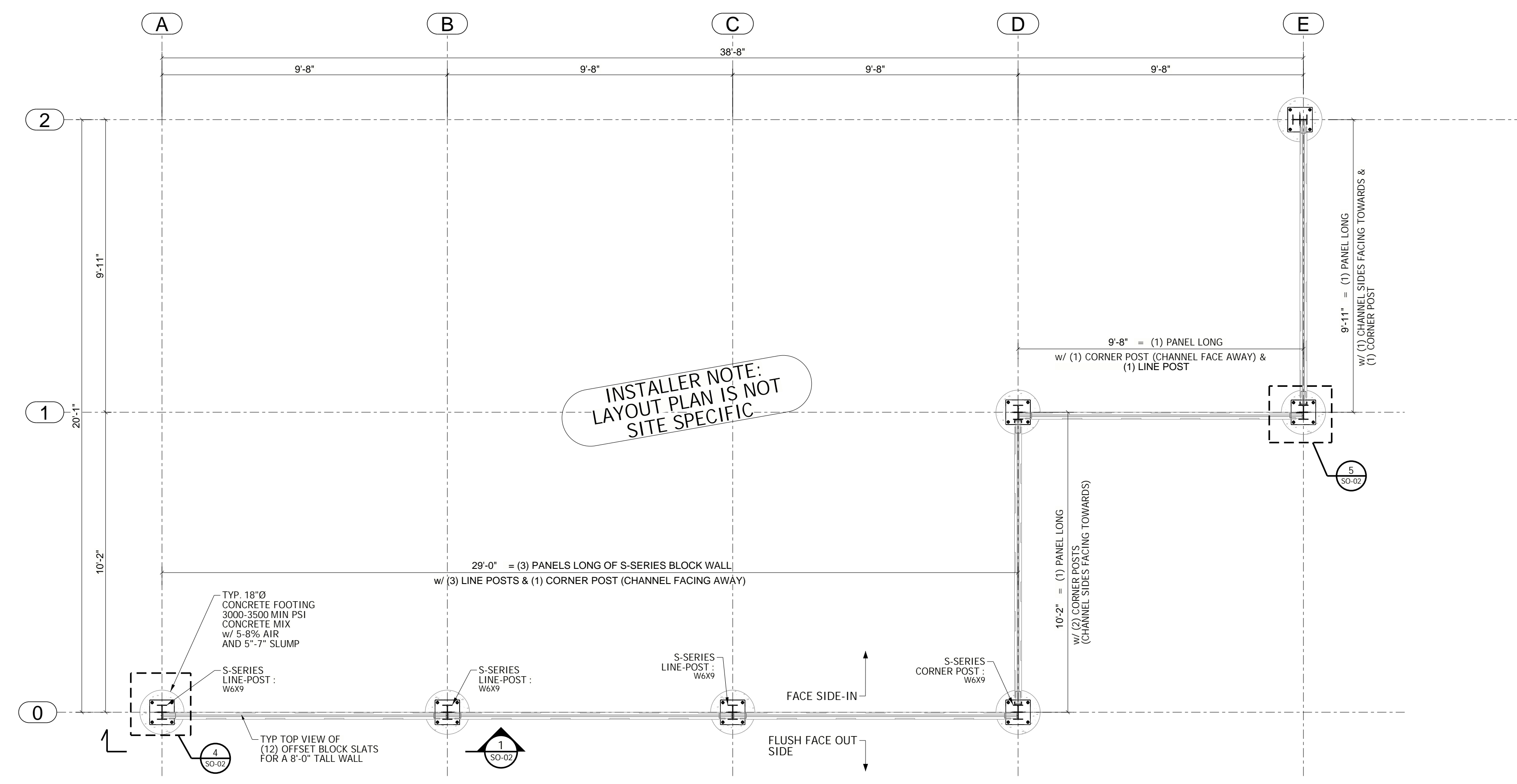
STANDARD BASE PLATE SECTION  
SCALE = 1:8



STANDARD (4) ANCHOR ROD SET UP  
SCALE = 1:8

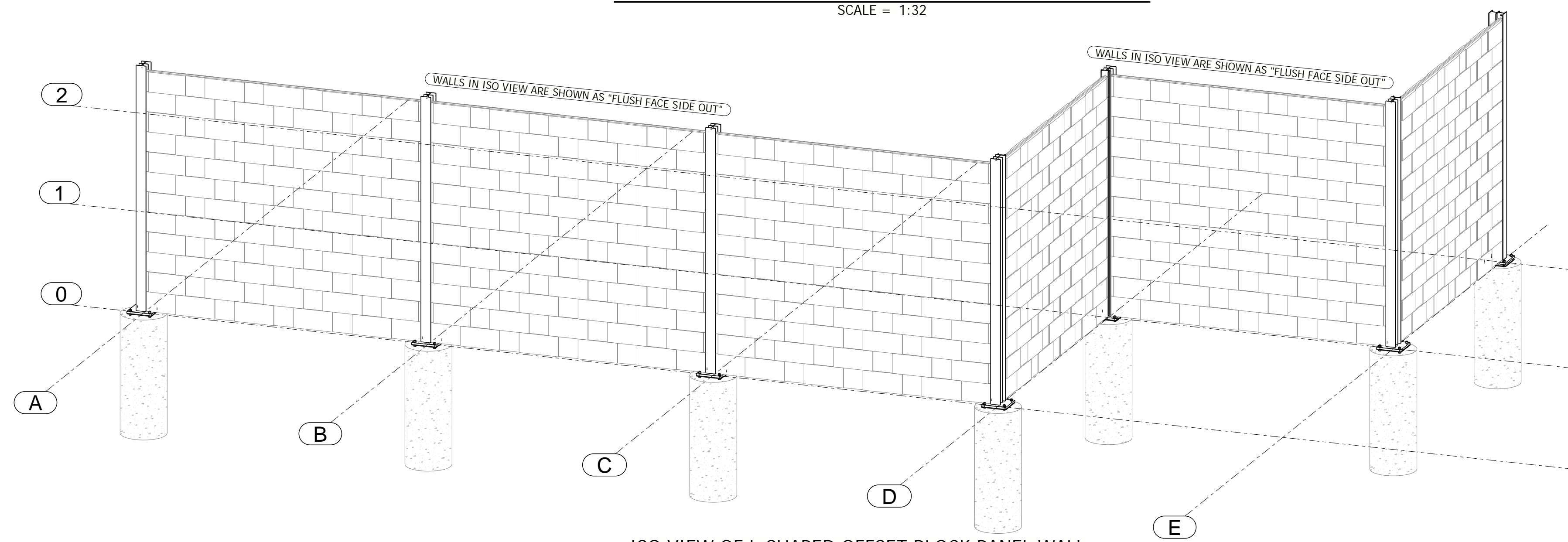


TYP SLAT INSTALL TO ERECTED S-SERIES POSTS  
SCALE = 1:24

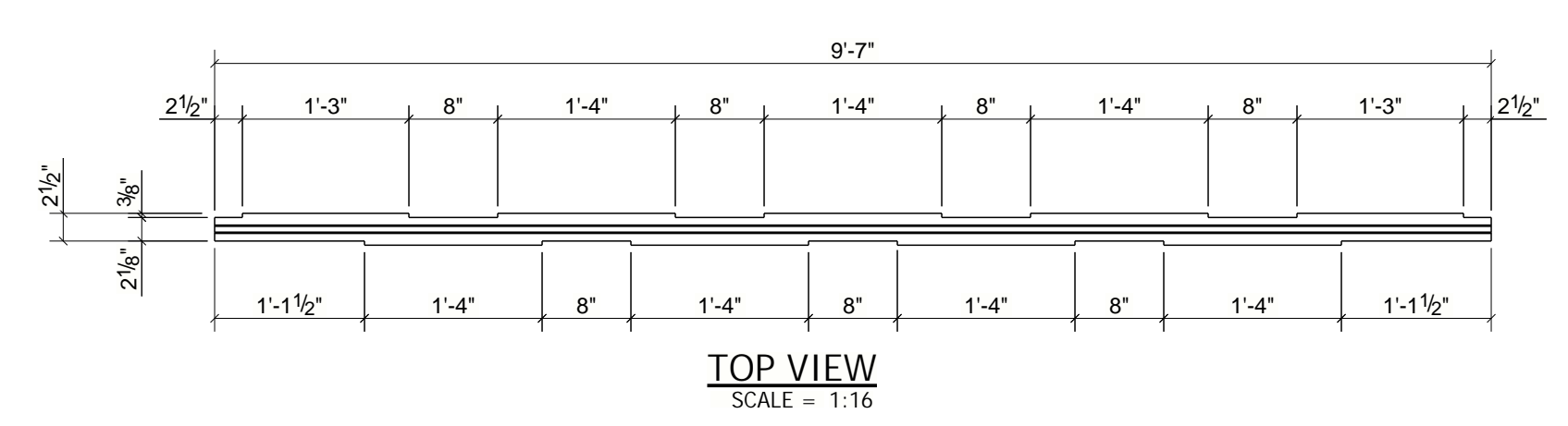


DURA-CRETE OFFSET BLOCK WALL w/ S-SERIES STEEL POSTS  
SCALE = 1:32

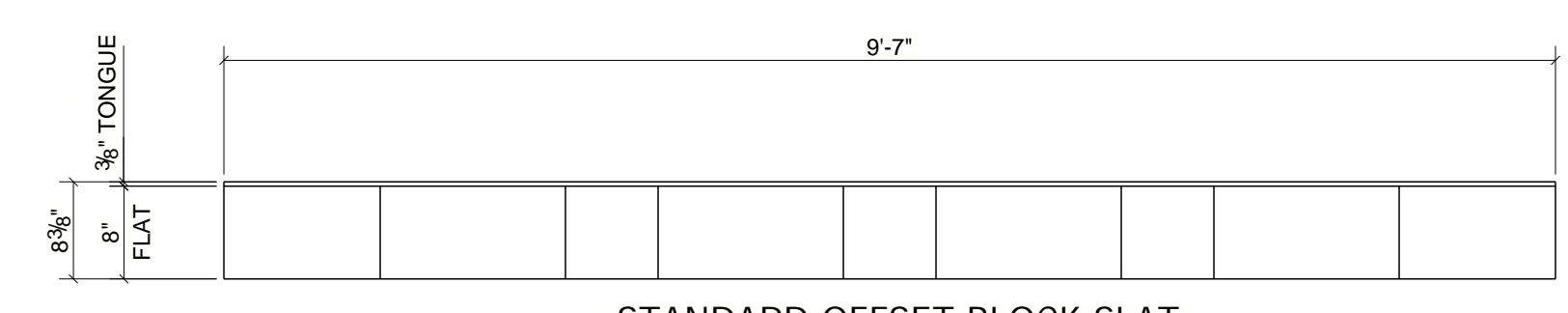
INSTALLER NOTE:  
LAYOUT PLAN IS NOT  
SITE SPECIFIC



ISO VIEW OF L-SHAPED OFFSET BLOCK PANEL WALL  
SCALE = 1:32



TOP VIEW  
SCALE = 1:16



END VIEW  
SCALE = 1:4

STANDARD OFFSET BLOCK SLAT (TONGUE & GROOVE ASSEMBLY)  
SCALE = 1:16

**S-SERIES OFFSET BLOCK WALL SPECIFICATIONS**  
 DURA-CRETE S-SERIES IN-LINE POST WT# = 121lbs  
 DURA-CRETE S-SERIES CORNER POST WT# = 139lbs  
 QTY OF DURA-CRETE S-SERIES POST PER WALL PANEL = 2 PER WALL PANEL (WEIGHT = 242lbs(IN-LINE POST))  
 DURA-CRETE SLAT (115") WT# = 160lbs  
 QTY OF DURA-CRETE SLATS REQ'D = 12 PER WALL PANEL (WEIGHT = 1920 POUNDS PER WALL PANEL)

REV	DATE	DESCRIPTION	BY
△	01/24/2025	FOR FIELD USE	CZM

# DURA-CRETE WALLS



23450 REGENCY PARK DR.  
 WARREN, MI 48089  
 P: 586.759.4286  
 www.duracretewalls.com

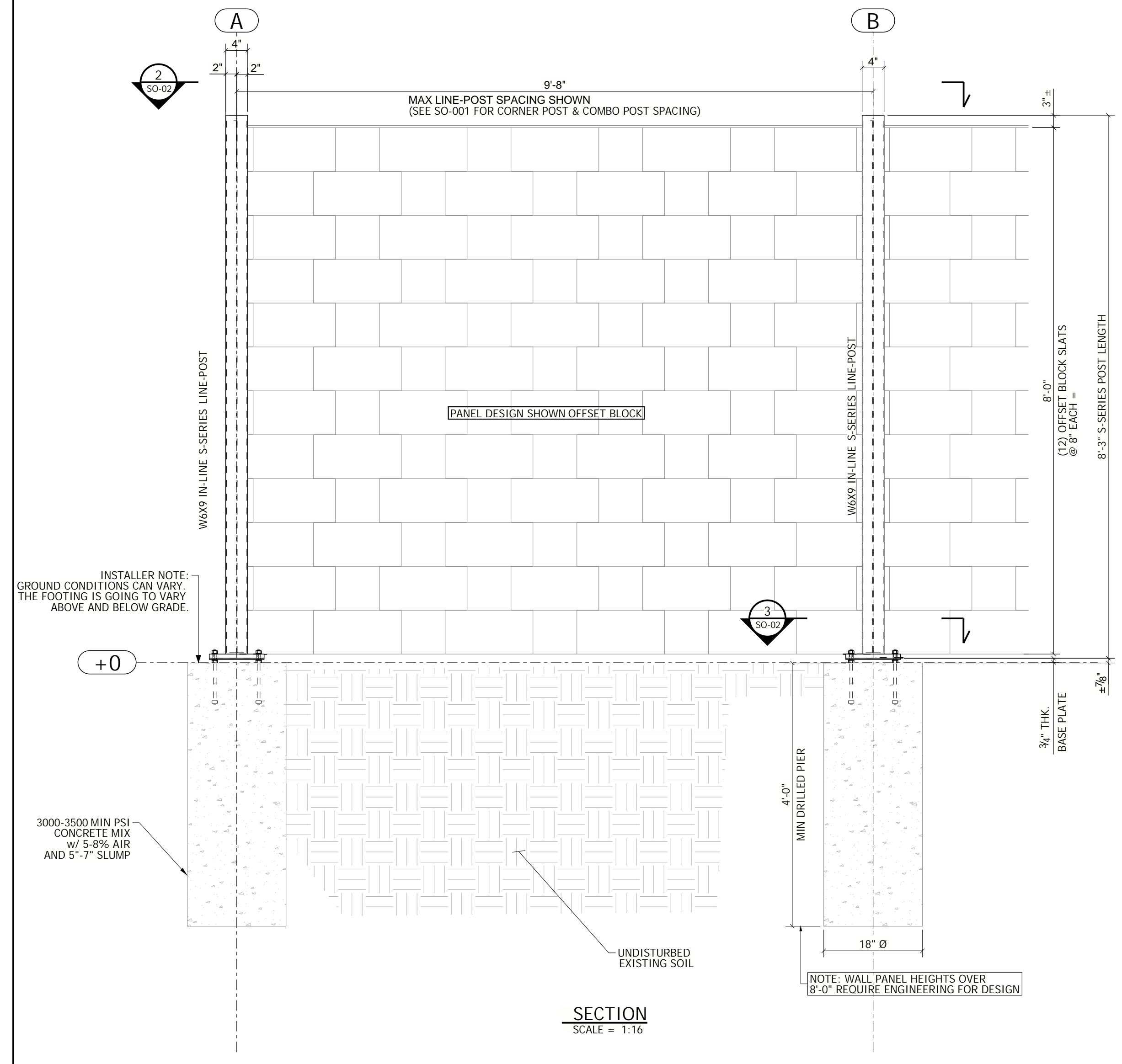
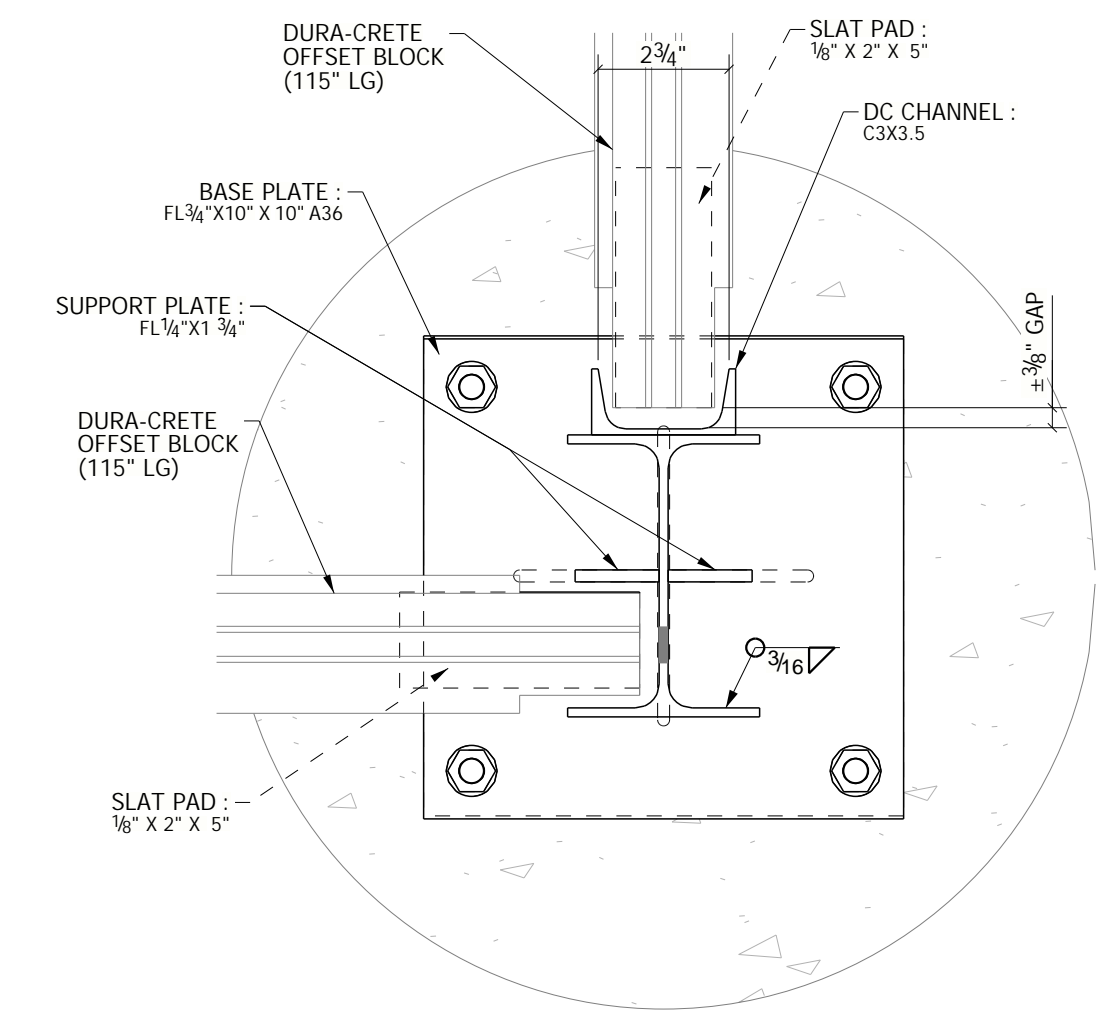
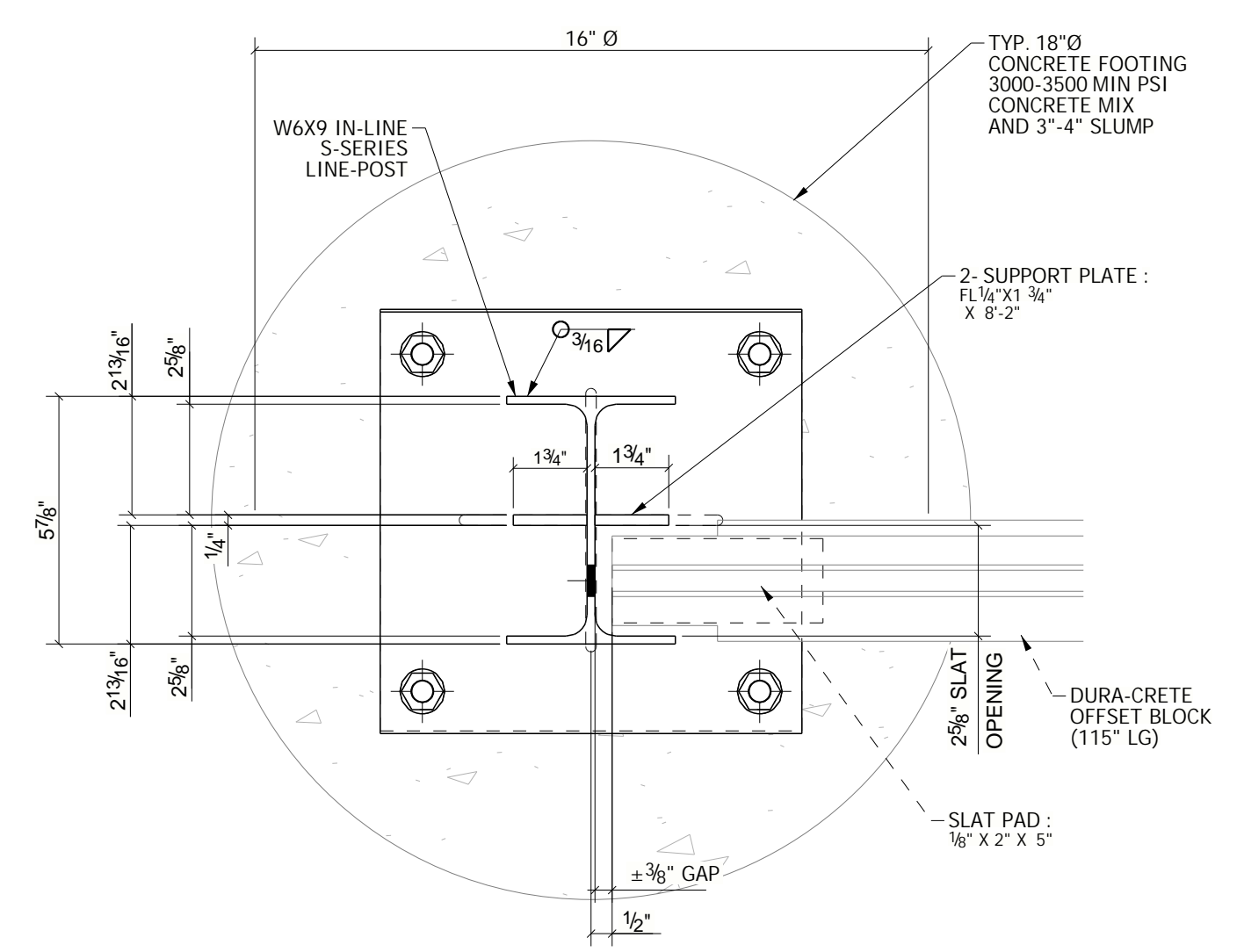
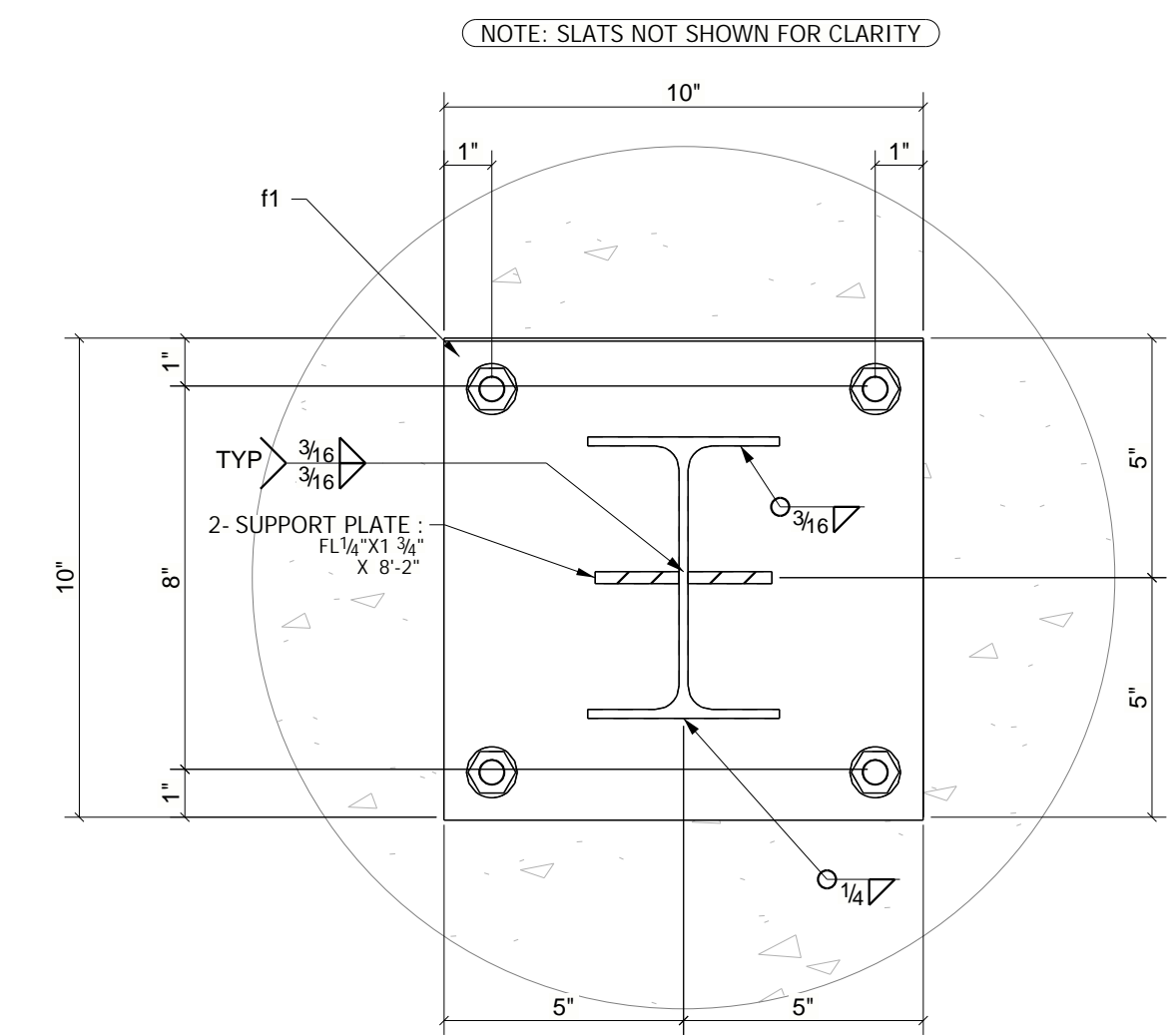
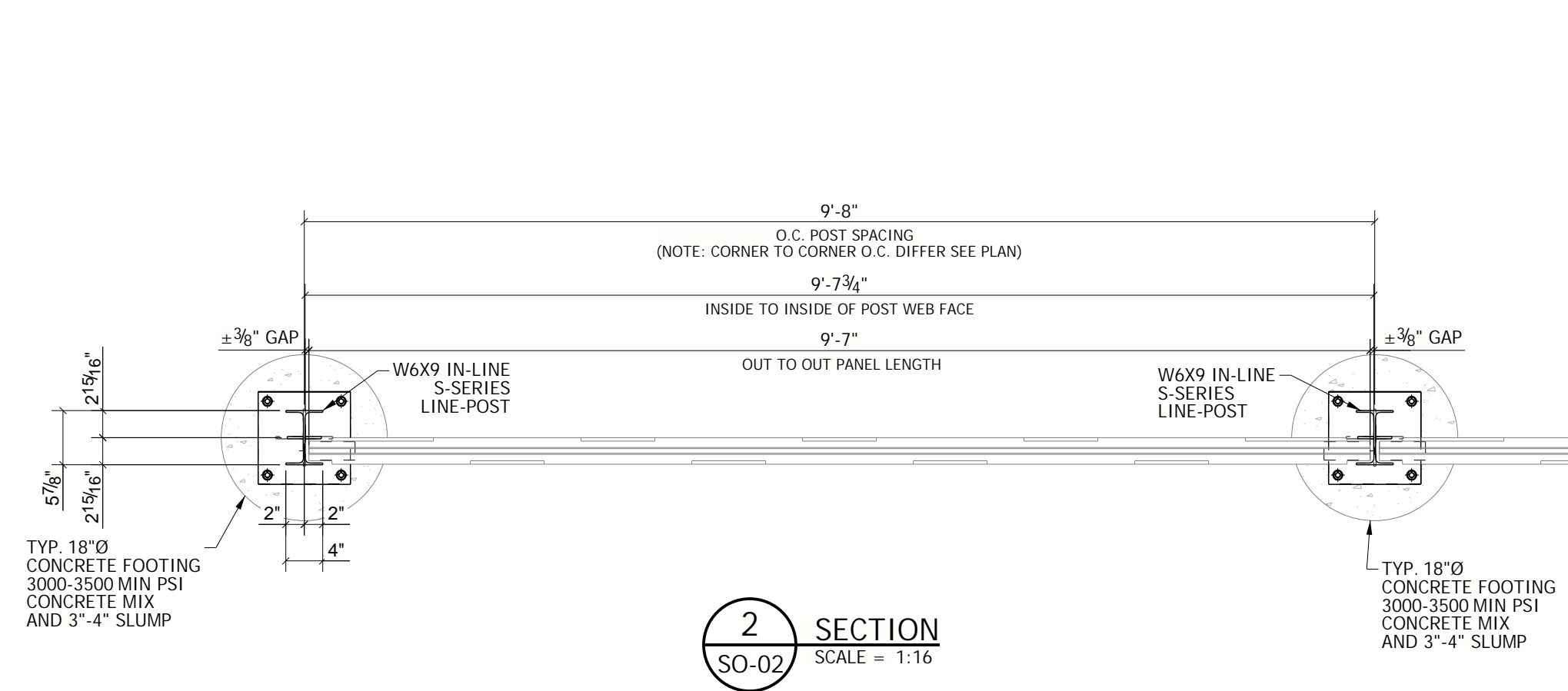
CLIENT:  
 ORDER NUMBER:  
 PROJECT NAME:  
 PROJECT LOCATION:  
 STREET:  
 CITY:  
 STATE:  
 PROJECT DESCRIPTION:

PLEASE NOTE: THESE DRAWINGS REPRESENT DURA-CRETE WALLS INTERPRETATION OF THE INTENT OF THE CONTRACT DOCUMENTS. EVERY EFFORT HAS BEEN MADE TO ENSURE THAT THEY ARE ACCURATE AND COMPLETE. APPROVAL BY THE AUTHORIZED PARTIES SHALL CONSTITUTE ACCEPTANCE, AND ANY POST-APPROVAL CHANGES WILL BE CONSIDERED TO BE CHANGES TO DURA-CRETE WALLS CONTRACT.

copyright Dura-Crete Products 2023.  
 patent pending

DRAWN BY: CZM  
 CHECKED BY: NCD  
 ORDER DONE BY: NCD  
 SHEET NUMBER: SO-01

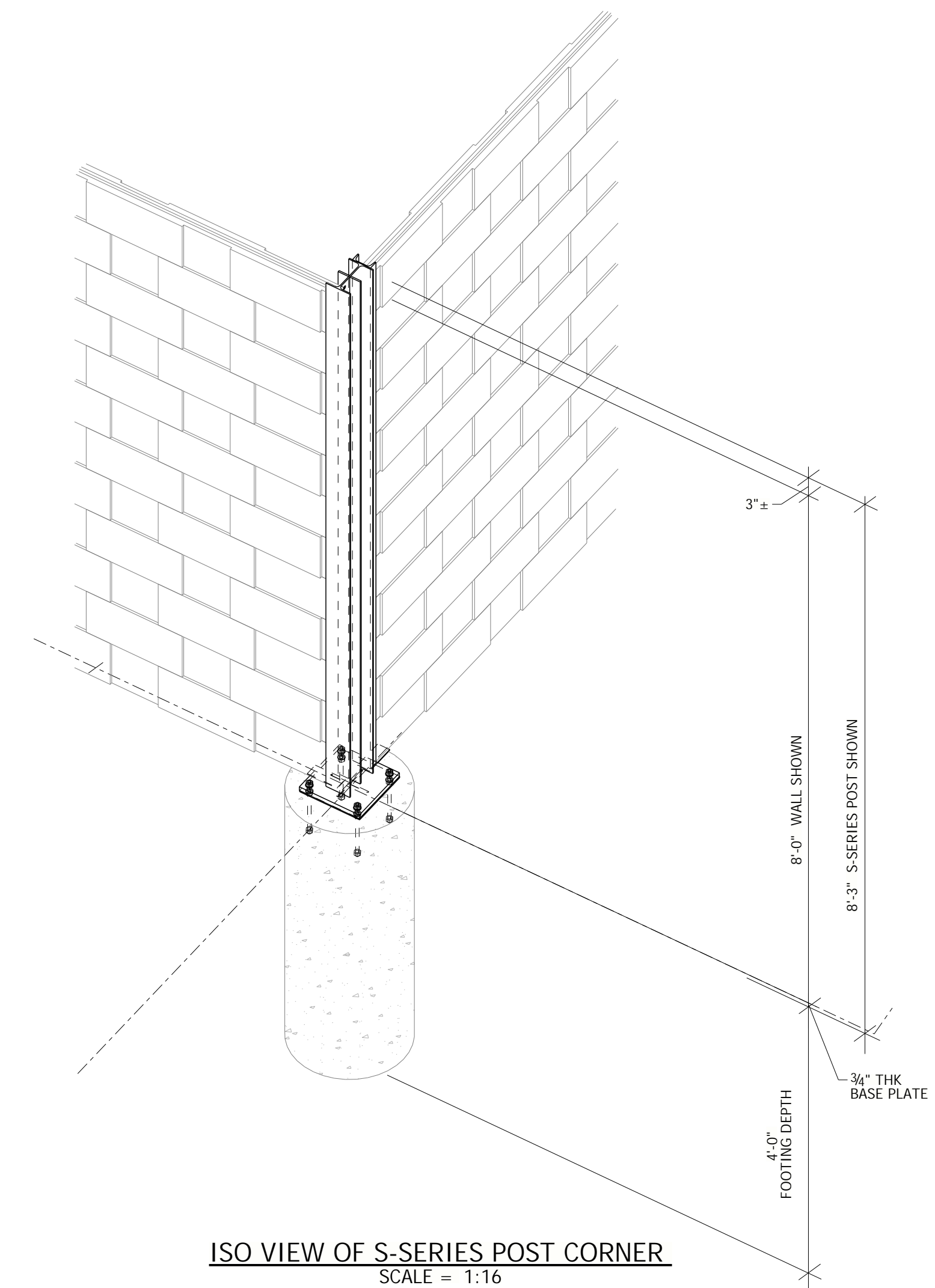
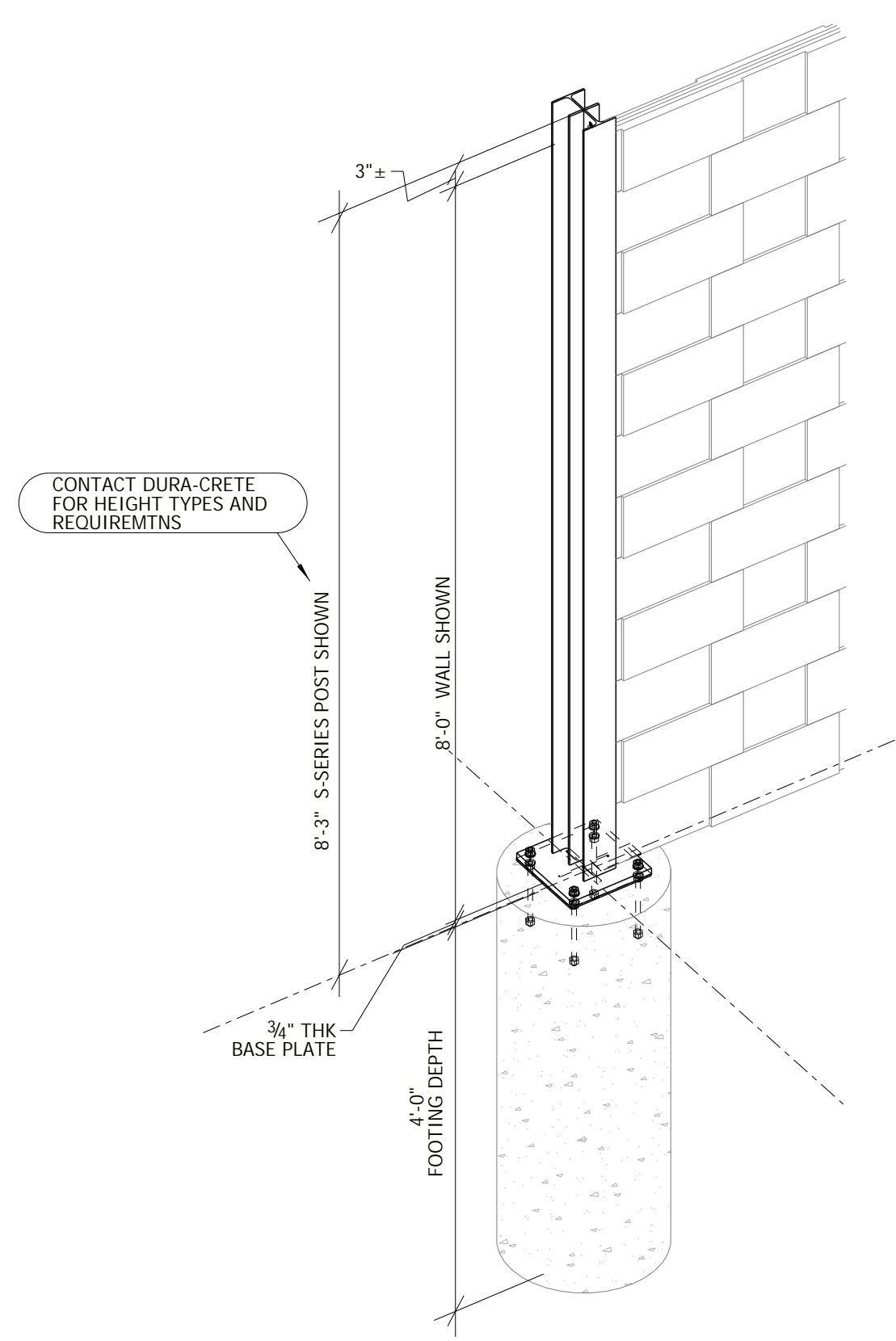




3 TYP BASE PLATE DETAIL  
SCALE = 1:4

4 TYP IN-LINE POST DETAIL  
SCALE = 1:4

5 TYP CORNER POST DETAIL  
SCALE = 1:4



ISO VIEW OF IN-LINE POST AND SLAT  
SCALE = 1:16

ISO VIEW OF S-SERIES POST CORNER  
SCALE = 1:16

**S-SERIES OFFSET BLOCK WALL SPECIFICATIONS**

DURA-CRETE S-SERIES IN-LINE POST WT# = 121lbs  
 DURA-CRETE S-SERIES CORNER POST WT# = 139lbs

QTY OF DURA-CRETE S-SERIES POST PER WALL PANEL = 2 PER WALL PANEL WEIGHT = 242lbs (IN-LINE POST)

DURA-CRETE SLAT (115") WT# = 160lbs

QTY OF DURA-CRETE SLATS REQ'D = 12 PER WALL PANEL WEIGHT = 1920 POUNDS PER WALL PANEL

REV	DATE	DESCRIPTION	BY
△	01/24/2025	FOR FIELD USE	CZM

# DURA-CRETE WALLS

23450 REGENCY PARK DR.  
 WARREN, MI 48089  
 P: 586.759.4286  
 www.duracretewalls.com

CLIENT:  
 PROJECT NAME:  
 ORDER NUMBER:  
 PROJECT LOCATION:  
 STREET:  
 CITY:  
 STATE:  
 PROJECT DESCRIPTION:

PLEASE NOTE:  
 THESE DRAWINGS REPRESENT DURA-CRETE WALLS INTERPRETATION OF THE INTENT OF THE CONTRACT DOCUMENTS. EVERY EFFORT HAS BEEN MADE TO ENSURE THAT THEY ARE ACCURATE AND COMPLETE. APPROVAL BY THE AUTHORIZED PARTIES SHALL CONSTITUTE ACCEPTANCE, AND ANY POST-APPROVAL CHANGES WILL BE CONSIDERED TO BE CHANGES TO DURA-CRETE WALLS CONTRACT.

DRAWN BY: CZM	CHECKED BY: NCD	ORDER DONE BY: NCD	SHEET NUMBER: SO-02
DATE: 02/26/2026	CHECKED DATE: 01/24/2025	DATE OF ORDER:	

